

# GETTING TO KNOW ABOUT LIFE SKILLS



# Learning

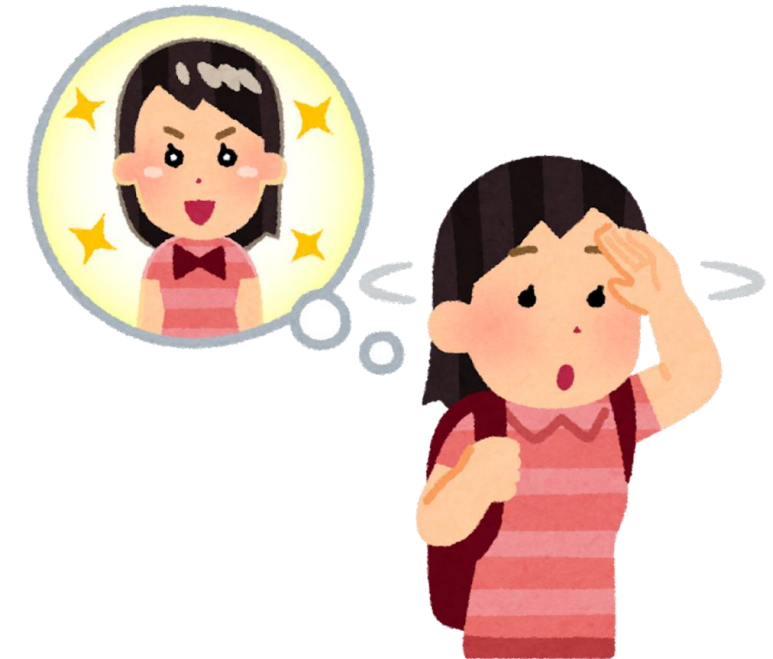
## Objectives



Getting to know life skills and its curriculum



Getting to know the lesson plan that students will learn for 4 months



Developing an attitude of learning awareness

# What to learn?



Getting to know  
about life skills



Creating Google account



Lesson Plan

# *What is Life Skills?*

**"The psychosocial ability to behave in adaptive and positive ways that enable a person to fulfil needs and resolve daily challenges effectively."  
(KBBI)**





# What is Life Skills?

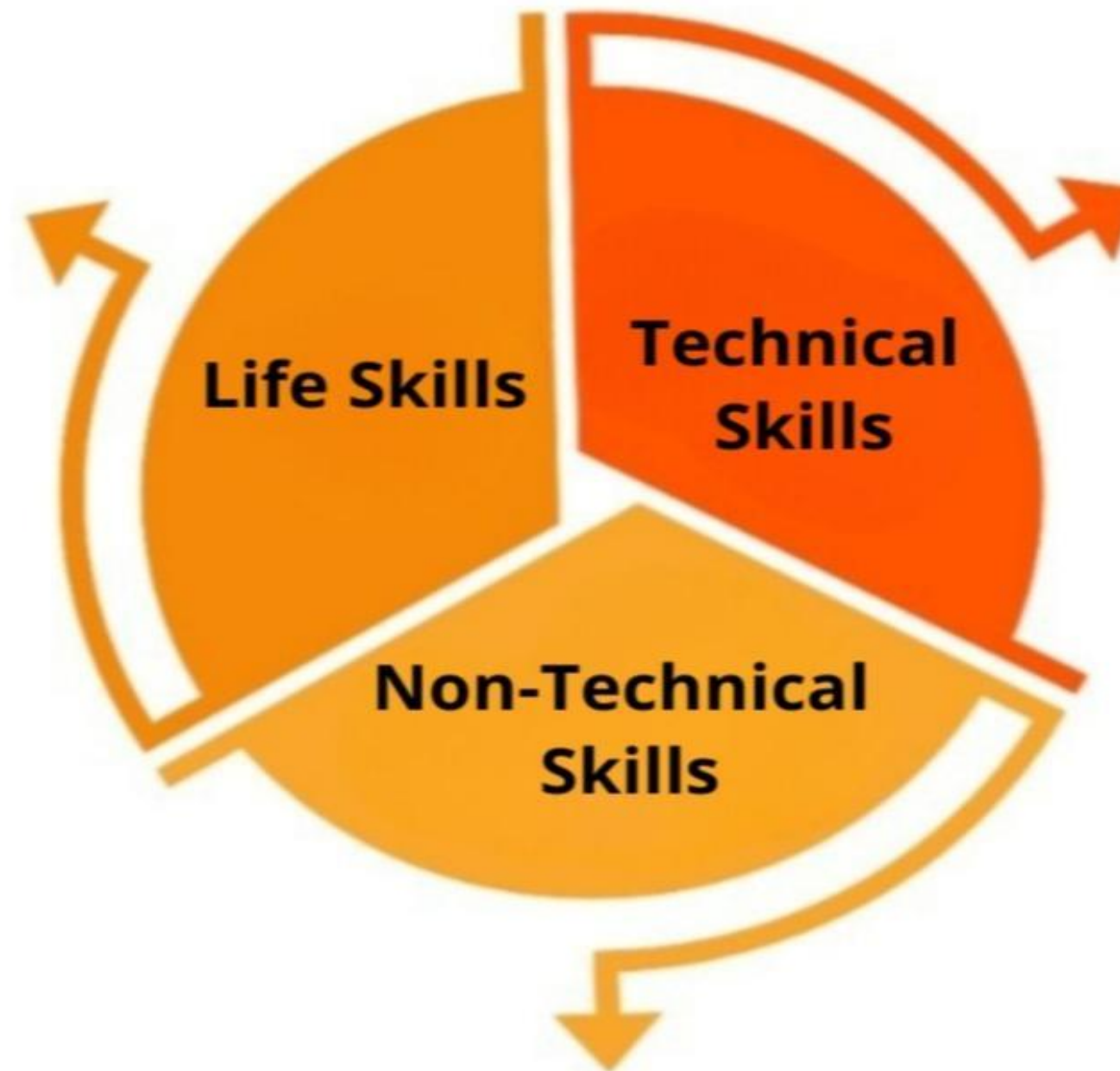
## According to WHO?

"It includes personal actions, social interactions, and efforts to change the environment to better support health and productivity, with the aim of helping individuals face daily challenges and achieve success in various aspects of life."



In practice, combining all three can have a balance for both personal and professional life

**Life Skills.** The fundamental things that need to be owned to develop technical skills and non-technical skills to be more optimal.



**Technical skills** that need to be supported by non-technical skills

**Non-Technical Skills** are crucial in the modern workplace where collaboration and relationship management are prioritized.

# What is the objective?

Young people can improve the skills and competencies needed for individuals to become active and responsible citizens in society.



# LIFE SKILLS CURRICULUM



## Self-Development

- Self-management
- Resilience
- Communication



## Learning Skills

- Creativity
- Critical thinking
- Problem solving
- Financial Literacy



## Employability

- Independence
- Discipline



## Active Citizen

- Valuing diversity
- Living with empathy
- Participation



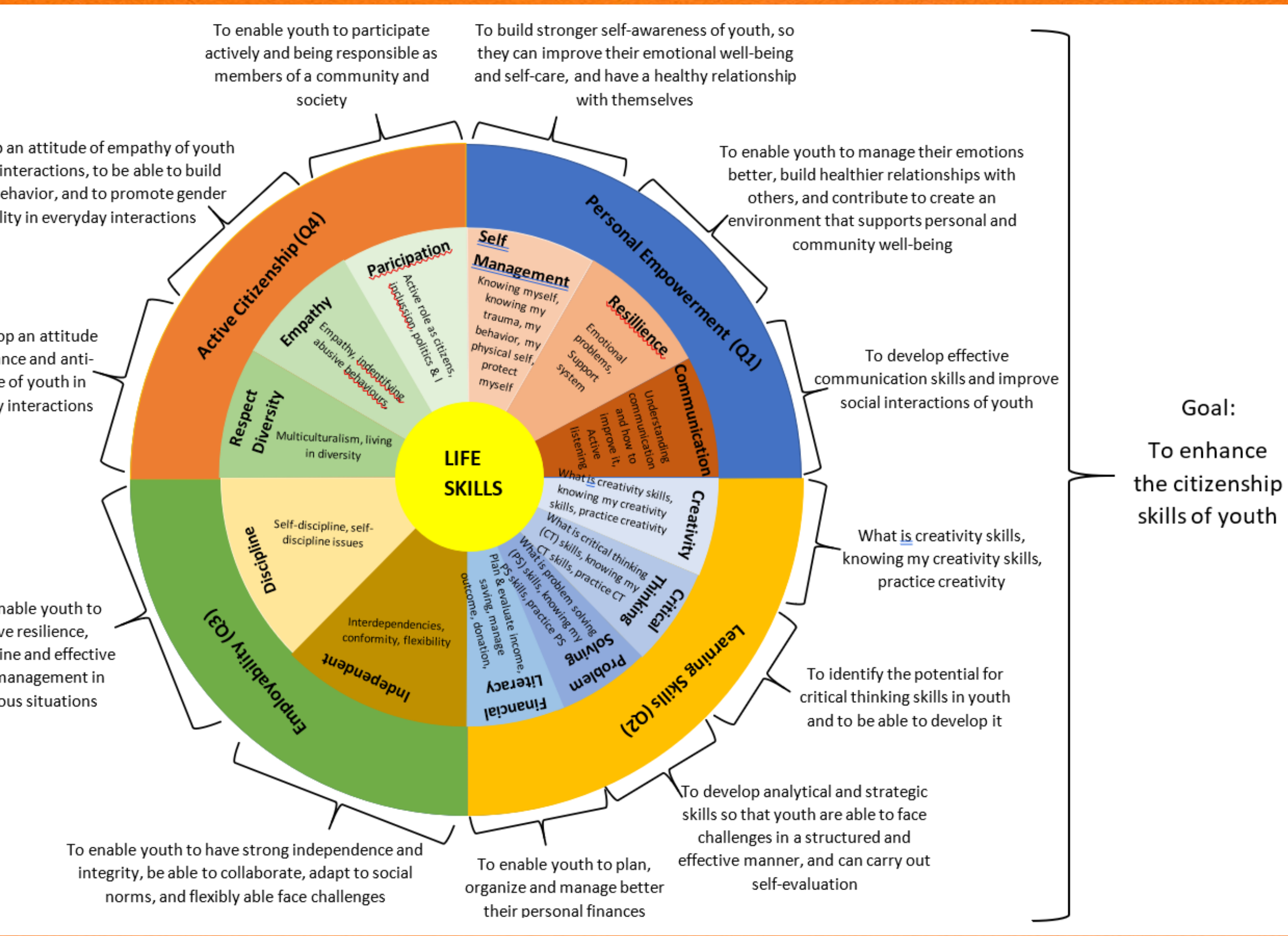


DIAGRAM  
OF  
LIFE SKILLS  
CURRICULUM



# DAILY LEARNING OVERVIEW

Actively engage and participate in:

1. Discussion
2. Activities
3. Individual assignments
4. Group assignments

Weekly journal writing missions.



- Help understanding.
- Evaluating experience
- Attracts learning.
- Leads to positive change

Daily assignments and weekly journals: in the form of photos uploaded to a digital folder in their Google Drive. Purpose of document storage:

1. To practice responsibility.
2. To become a collection of personal assignments (portfolio) and a record of personal development.

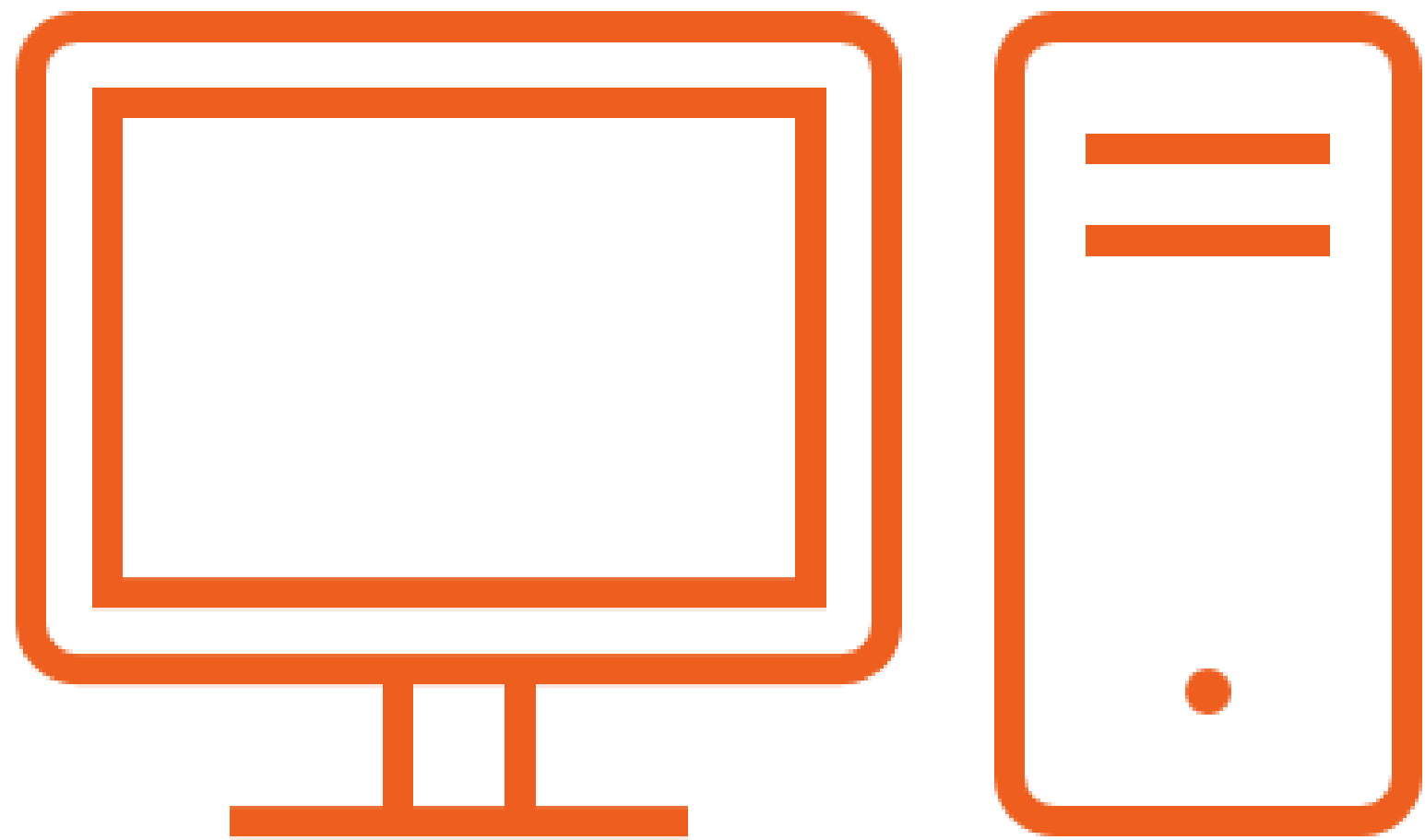
# ONE YEAR LESSON PLAN



atch 1	1st month			2nd month		3rd month		4th month	
andatory ass pre- st	Mandatory Modules: (first 1 month)  Self-Management (11)  Communication (3)	Mandatory class post- test with 1st month material	WBS will choose the next class to take (LS or Vocational)  Increasing post test scores will be a recommendation	Resilience (4)  Creativity (3)  Critical Thinking (3)  Problem Solving (2)  Financial Literacy (3)	Sharing Class with 2nd month material	Independence (10)  Discipline (5)	Sharing Class with 3rd month material	Appreciating Diversity (2)  Empathy (5)  Participation (4)	Post-test  All materials
atch 2									

andatory ass pre- st	Mandatory Modules: (first 1 month)  Resilience (4)  Independence (10)	Mandatory class post- test with 1st month material	WBS will choose the next class to take (LS or Vocational)  Increasing post test scores will be a recommendation	Self-Management (11)  Communication (3)	Sharing Class with 2nd month material	Creativity (3)  Critical Thinking (3)  Problem Solving (2)  Financial Literacy (3)  Discipline (4)	Sharing Class with 3rd month material	Discipline (1)  Appreciating Diversity (2)  Empathy (5)  Participation (4)	Post-test  All materials
atch 3									

andatory ass pre- st	Mandatory Modules: (first 1 month)  Empathy (5)  Discipline (5)  Creativity (3)	Mandatory class post- test with 1st month material	WBS will choose the next class to take (LS or Vocational)  Increasing post test scores will be a recommendation	Self- Management (11)  Resilience (4)	Sharing Class with 2nd month material	Communication (3)  Critical Thinking (3)  Problem Solving (2)  Financial Literacy (3)  Independence (5)	Sharing Class with 3rd month material	Independence (5)  Appreciating Diversity (2)  Participation (4)	Post-test  All materials
----------------------------	---	--	---	--	---	---	---	---	-----------------------------------



**CREATING** GOOGLE  
ACCOUNT, **FOLDER**  
IN GDRIVE, AND  
**UPLOAD** FILES TO  
GDRIVE FOLDER



# CREATING GOOGLE ACCOUNT

Google Support  
<https://support.google.com/mail/answer>

## Membuat akun Gmail - Bantuan Gmail - Google Help

Untuk **mendaftar** ke **Gmail**, buatlah Akun Google. Anda dapat menggunakan nama pengguna dan sandi untuk login ke Gmail dan produk Google lainnya seperti YouTube, Google Play, dan Google Drive. [See more](#)

**Buat Akun Google**

Masukkan nama Anda

Nama depan  
RORO

Nama belakang (opsional)  
RENAL

[Selanjutnya](#)

Indonesia [Bantuan](#) [Privasi](#) [Persyaratan](#)

**Informasi dasar**

Masukkan tanggal lahir dan gender

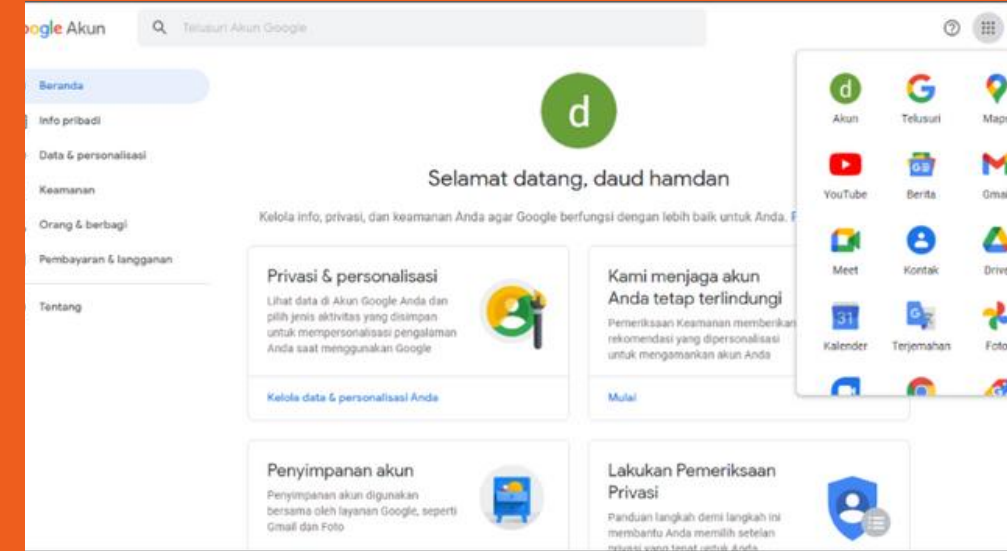
Hari Bulan Tahun

Gender

[Alasan kami meminta tanggal lahir dan gender](#)

[Selanjutnya](#)

Indonesia [Bantuan](#) [Privasi](#) [Persyaratan](#)



## AKUN SIAP DIGUNAKAN

Google

### Privasi dan Persyaratan

Untuk membuat Akun Google, Anda harus menyetujui [Persyaratan Layanan](#) di bawah. Selain itu, saat Anda membuat akun, kami memproses informasi seperti yang dijelaskan di [Kebijakan Privasi](#), termasuk poin-poin utama ini:

#### Data yang kami proses saat Anda menggunakan Google

- Saat Anda membuat Akun Google, kami menyimpan informasi yang diberikan, seperti nama, alamat email, dan nomor telepon.
- Saat Anda menggunakan layanan Google untuk melakukan hal-hal seperti menulis pesan di Gmail atau mengomentari video YouTube, kami akan menyimpan informasi yang dibuat.
- Misalnya, saat Anda menelusuri restoran di Google Maps atau menonton video di YouTube, kami akan memproses informasi tentang kegiatan tersebut – termasuk informasi seperti video yang ditonton, ID perangkat, alamat IP, data cookie, dan lokasi.
- Kami juga memproses jenis informasi yang dijelaskan di atas saat Anda menggunakan aplikasi atau situs yang menggunakan layanan Google, seperti iklan, Analytics, dan Search Console.

Anda mengontrol data yang kami kumpulkan & cara penggunaannya

**Optimalkan penggunaan nomor telepon Anda**

Jika mau, Anda dapat menambahkan nomor telepon ke akun untuk digunakan di berbagai layanan Google. [Pelajari selengkapnya](#)

Misalnya, nomor Anda akan digunakan untuk

- ☐ Terima panggilan video & pesan

**G** Membuat layanan Google, termasuk iklan, jadi lebih relevan bagi Anda

[Opsi lainnya](#)

[Kembali](#)

[Lewati](#) [Ya, saya ikut](#)

Info pribadi Anda bersifat rahasia & aman

**Buat sandi yang kuat**

Buat sandi yang kuat dengan campuran huruf, angka, dan simbol

Sandi

Konfirmasi

☐ Tampilkan sandi

[Selanjutnya](#)

Indonesia [Bantuan](#) [Privasi](#) [Persyaratan](#)

**Konfirmasi Anda bukan robot**

Dapatkan kode verifikasi yang dikirim ke ponsel Anda

Nomor telepon

Google akan memverifikasi nomor ini melalui SMS (dapat dikenakan biaya).

[Selanjutnya](#)

Indonesia [Bantuan](#) [Privasi](#) [Persyaratan](#)

**Pilih alamat Gmail Anda**

Pilih alamat Gmail atau buat alamat Gmail Anda sendiri

- ☐ rororenal0@gmail.com
- ☐ renalroro12@gmail.com
- ☐ Buat alamat Gmail Anda sendiri

[Gunakan email yang sudah Anda miliki](#) [Selanjutnya](#)

Indonesia [Bantuan](#) [Privasi](#) [Persyaratan](#)

# CREATING GOOGLE ACCOUNT, FOLDER IN GDRIVE, AND UPLOAD FILES TO GDRIVE FOLDER



If you already have a google account, you can access Google Drive without re-registration



Google Drive

<https://drive.google.com>

## Google Drive: Sign-in

Access Google Drive with a Google account (for personal use) or Google account (for business use).



Drive

+ Baru

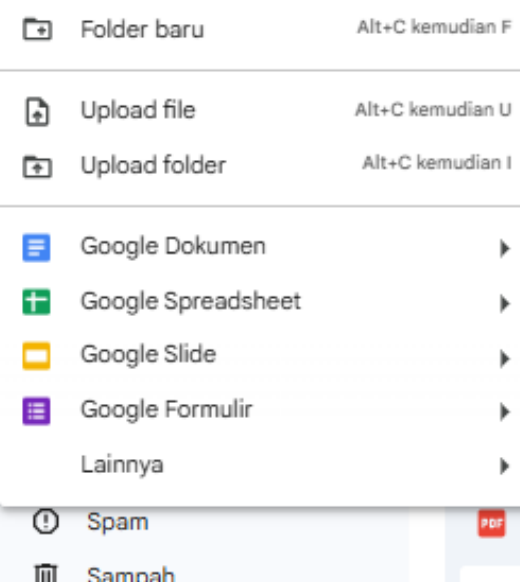
Beranda

Drive Saya

Komputer

Dibagikan kepada saya

Terbaru



### Folder baru

Folder tanpa nama

Batal

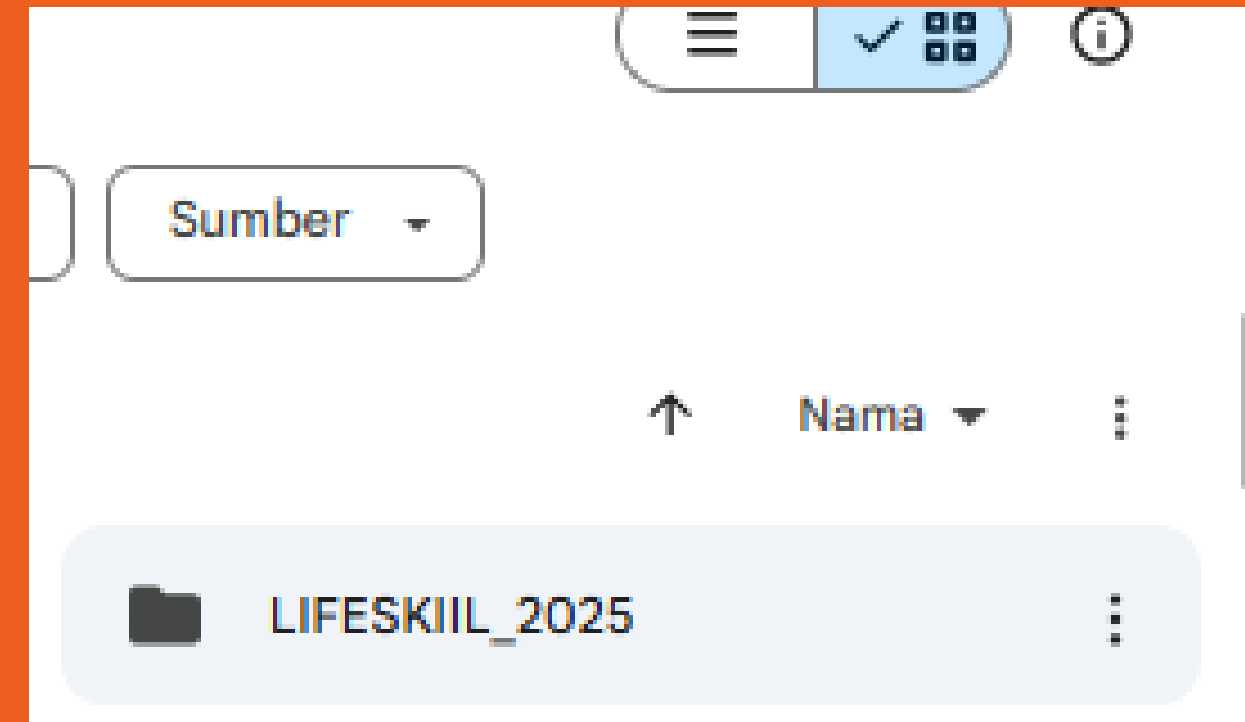
Buat

### Folder baru

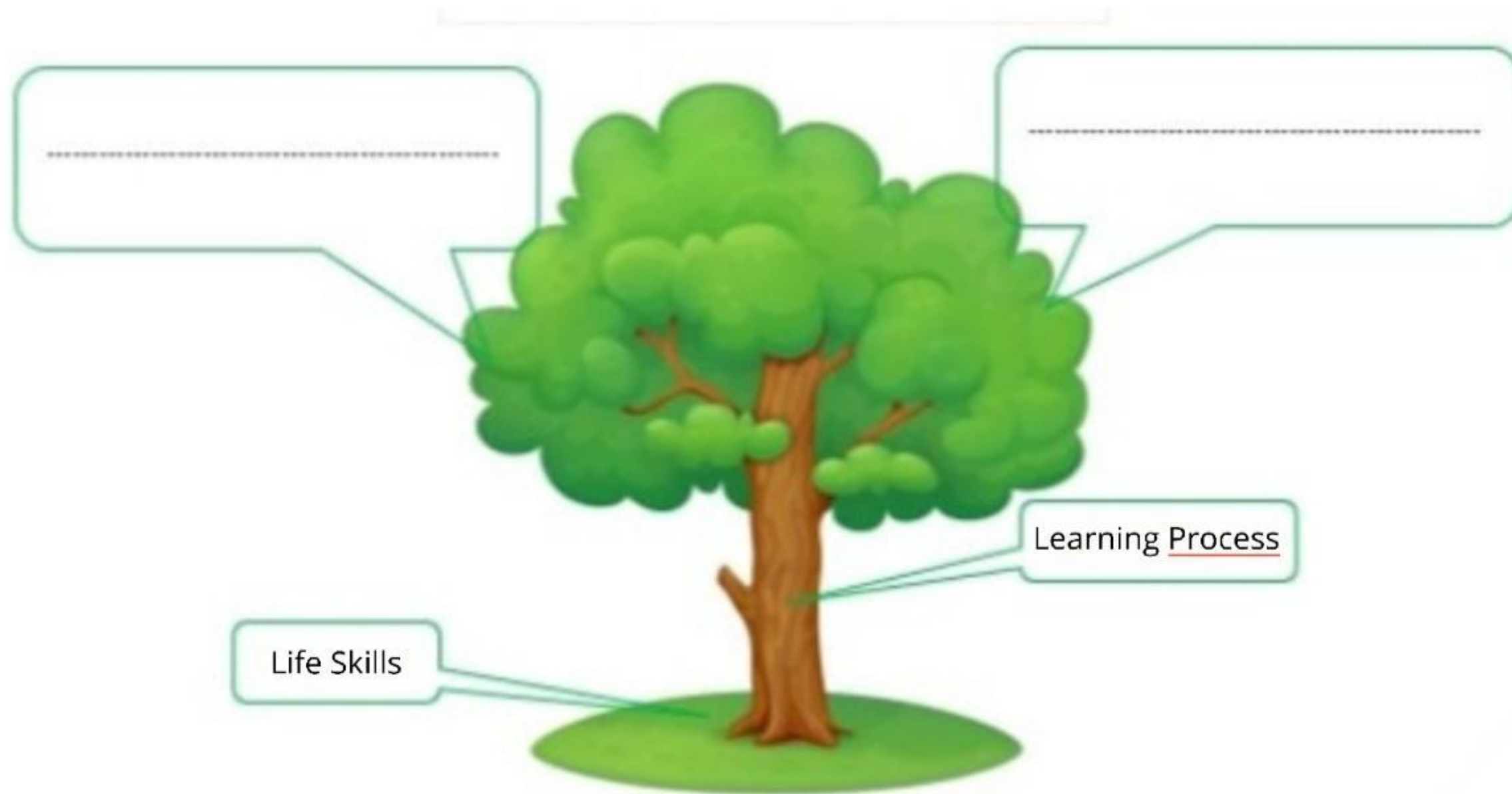
LIFESKIIL\_2025

Batal

Buat



# WRITE YOUR HOPES



# PRE-TEST



# PLAN





# World Vision

INDONESIA

Wahana Visi Indonesia bermitra dengan World Vision yang mendukung KOICA PMC Project yang bertujuan untuk meningkatkan Rehabilitasi Sosial bagi Remaja Rentan di Indonesia yang di inisiasi oleh Korea Institute for Development Strategy (KDS). ReBach Internasional dan World Vision Korea dan didanai oleh Korea Cooperation Agency (KOICA)

**KOICA**  
Korea International  
Cooperation Agency

**KDS** Korea Institute for  
Development Strategy

**RE:BACH**  
international

World Vision



Wahana Visi Indonesia

[www.wahanavisi.org](http://www.wahanavisi.org)



@wahanavisi\_id