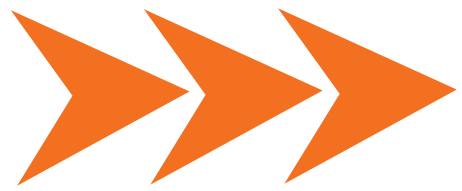
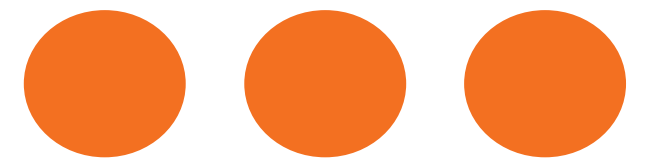




REFERENCE AND CRITICAL THINKING EXERCISES



Learning Objectives



Apply critical thinking
references to assigned tasks



Communicate group
assignments in front of the
class



Apply critical thinking
guidelines in daily life



Develop a curiosity and open-
minded attitude



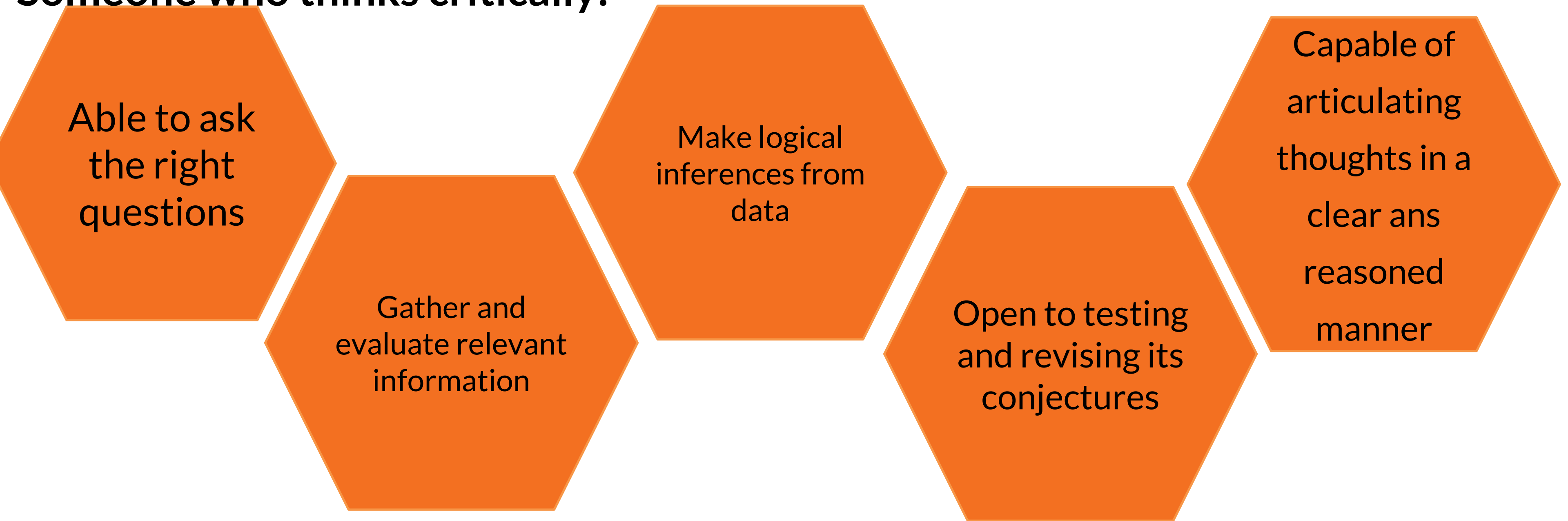
**Critical thinking helps us sort through
information, understand context, and make
better decisions.**

Paul & Elder (2010)

What is CRITICAL THINKING?

According to Paul dan Elder (2010)

Someone who thinks critically:



Able to ask
the right
questions

Gather and
evaluate relevant
information

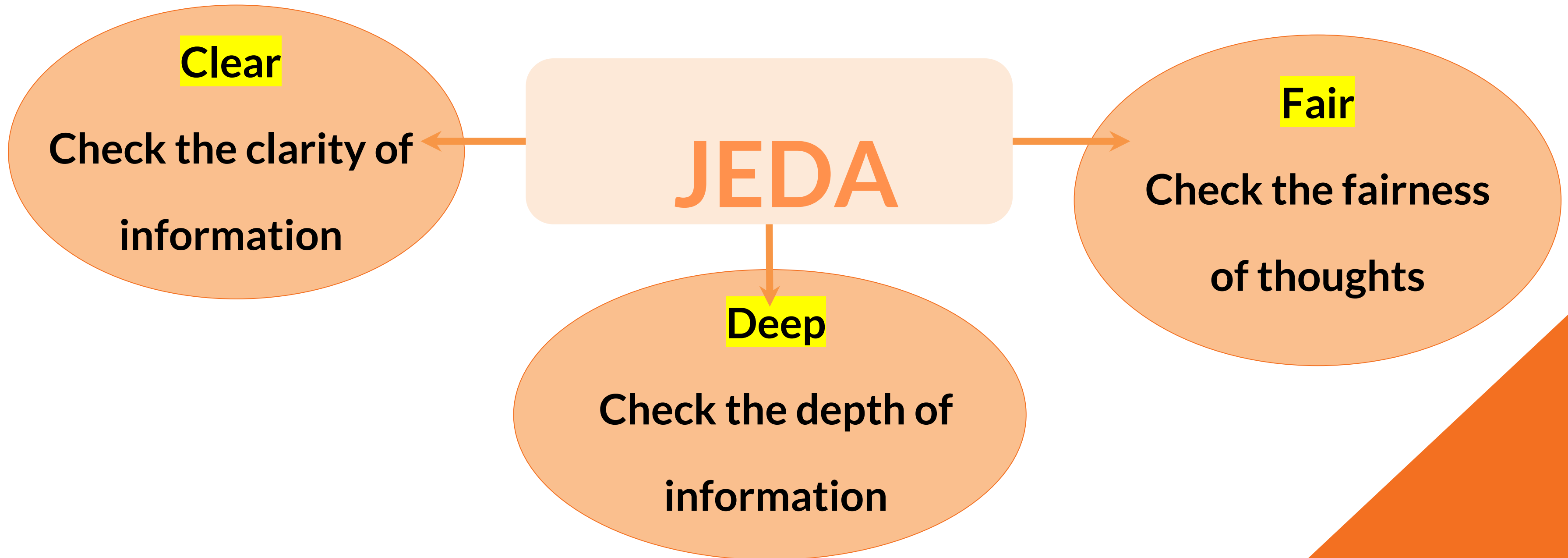
Make logical
inferences from
data

Open to testing
and revising its
conjectures

Capable of
articulating
thoughts in a
clear and
reasoned
manner

Critical Thinking Reference

Taking time to process information, activating conscious thought
processes to avoid being automatic and reactive



JEDA – Jelas (Clear)

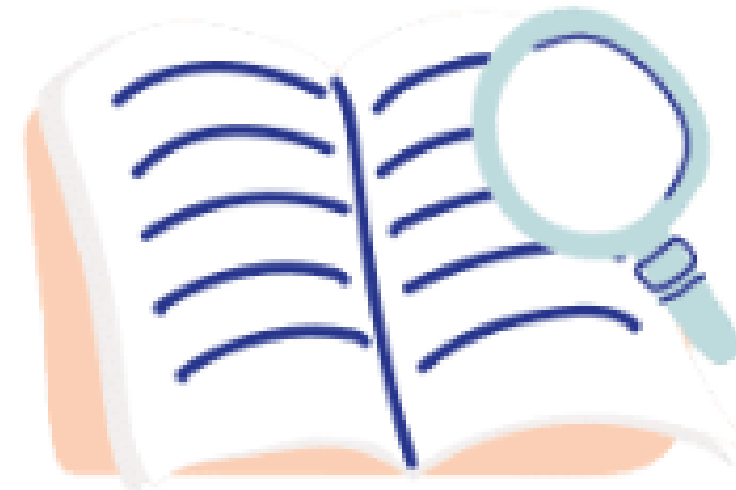
Check the clarity of information



Definition of
language/terms



Context of the
information/issue



Details of information



The core issue

Without clarity, understanding can be wrong and conclusions can be erroneous



JEDA – Deep (Dalam)

Check the depth of information



Information linkage



Things that are
inconsistent/unsynchronized



The logic within



Find out the
evidence



Different
perspectives

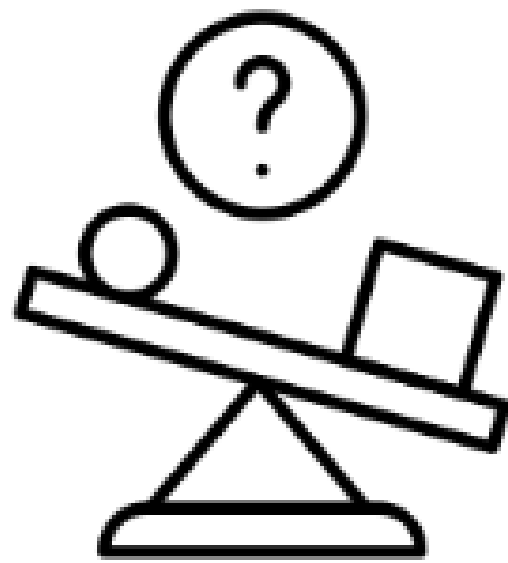


Impact/consequences.

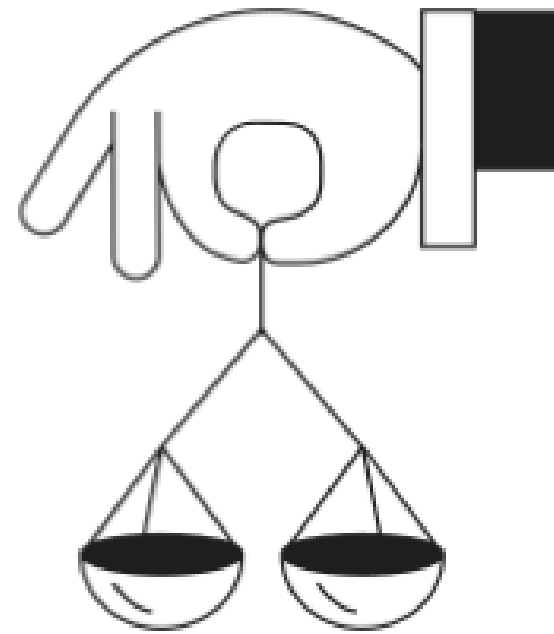
Thinking superficially can lead to wrong conclusions. The deeper we analyze, the better our understanding!

JEDA – Fair (Adil)

Check the Fairness of Thoughts



Am I being biased?



Am I being fair with this
issue?



Do I have a hidden agenda?

Without fairness in our thoughts, we are easily trapped in assumptions and prejudices.

CASE STUDY

“Viral, Fake Eggs in Indonesia”

How to apply JEDA in this case?



Clarity:

- What does “fake egg” mean?
- Where is the source of the news?
- Has this news been

ified?

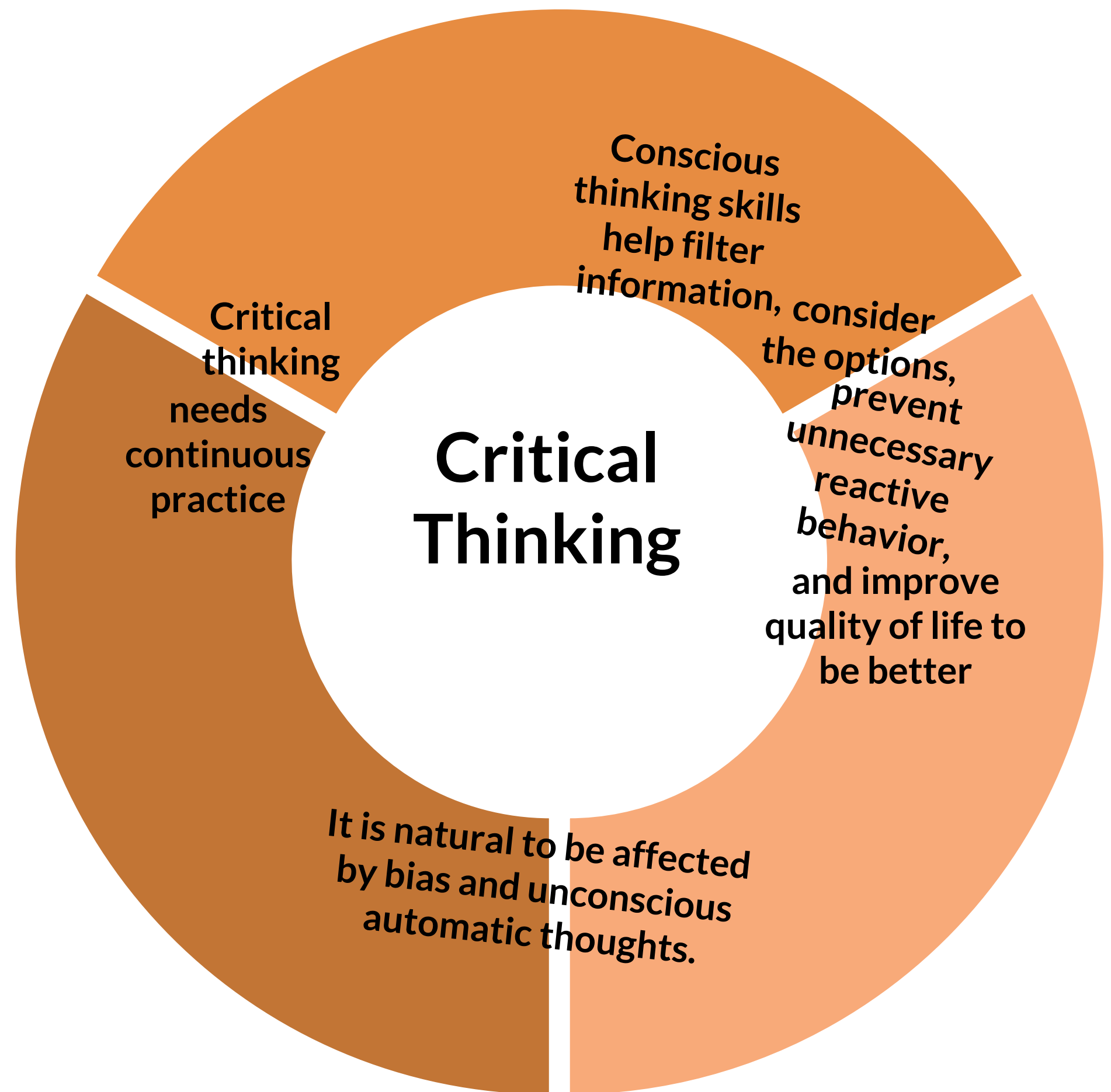
Depth:

- Is there any scientific evidence that these eggs are really fake?
- If so, what is the motive behind egg counterfeiting?
- Is there a scientific explanation for this

Fair:

- Have I sought information from trusted sources?
- Do I easily believe without verification?
- Am I spreading this information without verifying it?

Critical Thinking



World Vision

INDONESIA

Wahana Visi Indonesia bermitra dengan World Vision yang mendukung KOICA PMC Project yang bertujuan untuk meningkatkan Rehabilitasi Sosial bagi Remaja Rentan di Indonesia yang di inisiasi oleh Korea Institute for Development Strategy, ReBach Internasional dan World Vision Korea dan didanai oleh Cooperation Agency (KOICA)

KOICA
Korea International
Cooperation Agency

KDS Korea Institute for
Development Strategy

RE:BACH
international

World Vision



Wahana Visi Indonesia

www.wahanavisi.org



@wahanavisi_id