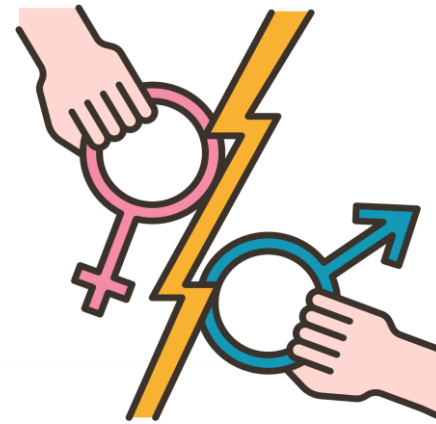


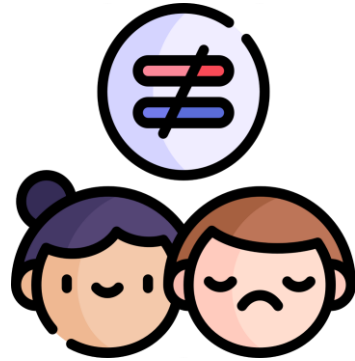
# Gender Equality & Inequality



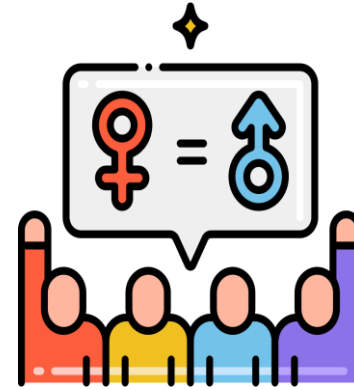
# Learning Objectives



Analyze issues related to gender inequality



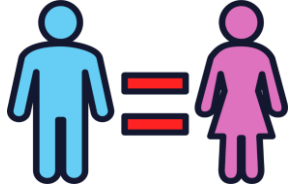
Identify forms of gender inequality present in the local community.



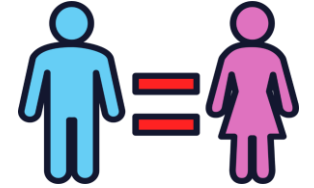
Better understand the concept of gender



Have an attitude of honesty and openness



# Definition of Gender Knowledge



“Gender-related concepts, analysis and objectives. Including the complexity of gender, different types of gender identities, challenges faced by individuals with diverse gender identities, and the importance of an inclusive and respectful environment.”

~UN WOMEN (2023)



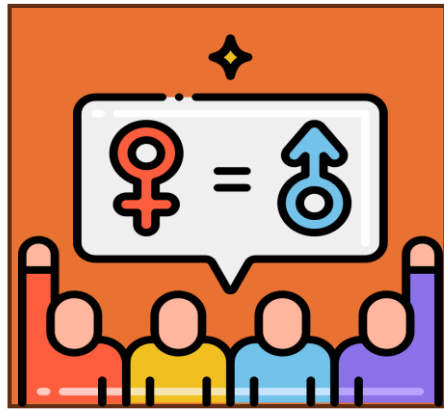
# Definition of Gender

“The socially constructed characteristics of women and men. These include the norms, behaviors, and roles attached to that gender.”

~WHO (2023)



# The Importance of Gender Knowledge



1. Raising awareness of gender equality (EIGE, 2019)



2. Helps appreciate the characteristics & roles of each gender



3. Encourage fair behavior towards others (Floriasti, n.d.)

# *Gender Equality*

A condition where all genders have equal rights, opportunities and resources to reach their full potential.



**VS**

# *Gender Inequality*

Injustices that occur due to systems and structures in society that limit rights or roles based on gender.



# Forms of Gender Equality

## Education

Every gender has equal opportunities to access education



## Work

Each gender has an equal opportunity to pursue a particular field of work and achieve a particular position.



## Health

Every gender has equal access to health facilities



## Roles at Home

Each gender has the right to determine their role at home.





# Forms of Gender Inequality

## Double Load

- Workload is greater for one gender

## Marginalization

- Exclusion of certain groups due to gender

## Labeling/Stereotyping

- The assignment of attributes or roles based on prejudice against gender identity.

## Discrimination

- Unequal treatment based on gender

## Abuse

- The act of harming individuals due to inequality.



# Causes of Gender Inequality

**Education & Parenting:** Differential treatment from childhood, such as gender-based toys.



**Cultural & Socio-economic:** The view that men are more valuable because they are seen as a source of income.



# Effects of Gender Inequality



Influencing  
Attitude &  
Ambition

Hinders  
Participation



Lower Self-  
Confidence



# The Importance of Gender Equality

Uphold Human Rights



Improve Economy & Health



Support Country Development



# World Vision

INDONESIA

Wahana Visi Indonesia bermitra dengan World Vision yang mendukung KOICA PMC Project yang bertujuan untuk meningkatkan Rehabilitasi Sosial bagi Remaja Rentan di Indonesia yang di inisiasi oleh Korea Institute for Development Strategy (KDS), ReBach Internasional dan World Vision Korea dan didanai oleh Korea Cooperation Agency (KOICA)

**KOICA**  
Korea International  
Cooperation Agency

**KDS** Korea Institute for  
Development Strategy

**RE:BACH**  
international

World Vision



Wahana Visi Indonesia

[www.wahanavisi.org](http://www.wahanavisi.org)



@wahanavisi\_id