

Individual & Social Inclusion, Emotional & Functional Inclusion



Learning Objectives



Identify positive examples of inclusive behavior among youth



Analyze inclusion that occurs in various areas of life



Develop critical and analytical skills

What is Inclusion?

Inclusion is to build an environment that is open to anyone with different backgrounds and conditions, such as: characteristics, physical conditions, personality, status, ethnicity, culture, etc.

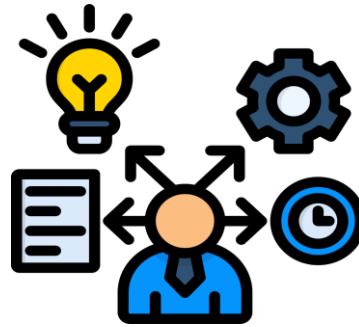
~Kemendikbudristek (2022)~



Purpose of Inclusion



1. Eliminate discrimination in all aspects of life.



2. Provide equal access and opportunity for all individuals.

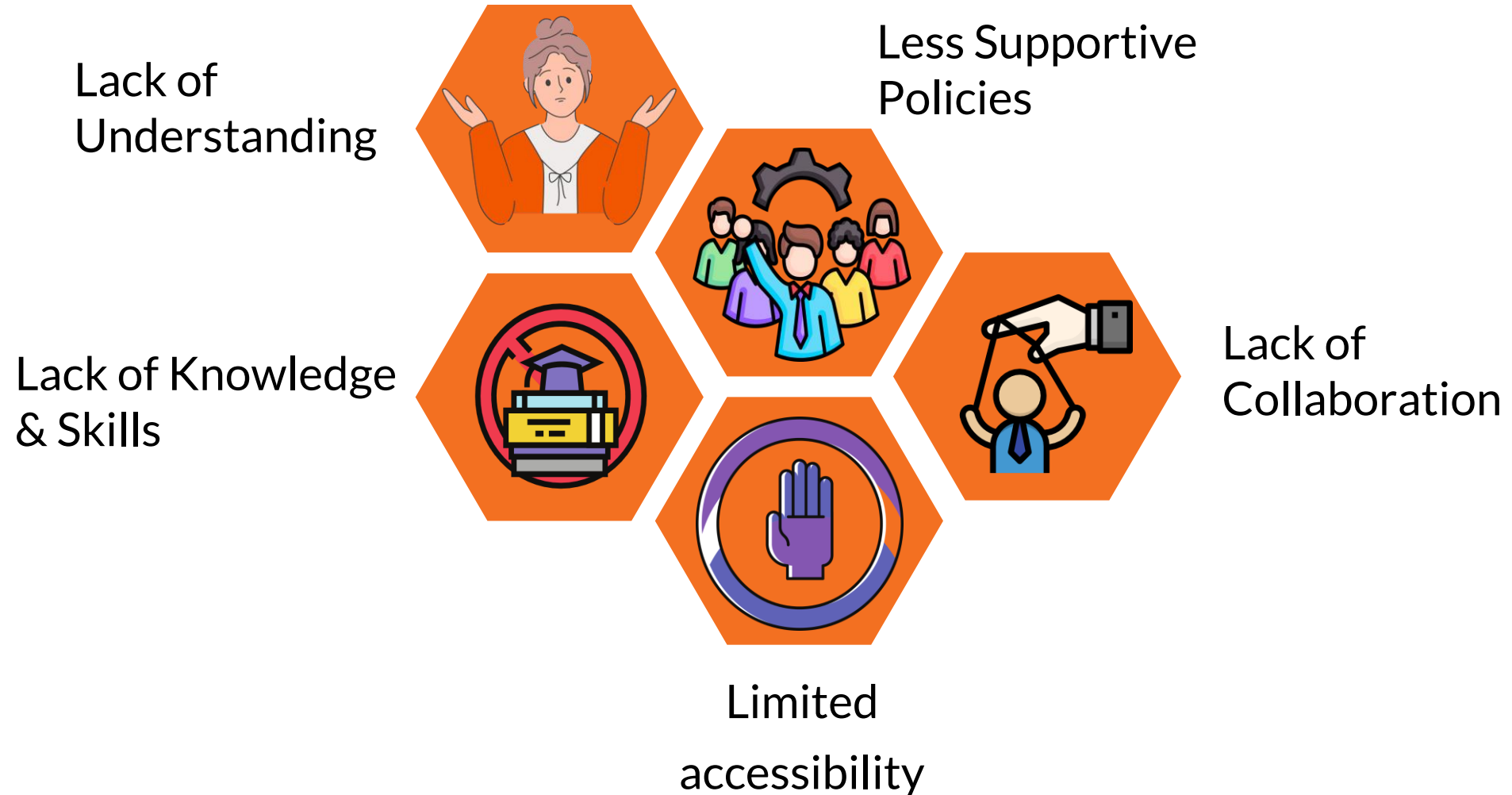


3. Encourage equal, confident and independent participation in society.

Benefits of Inclusion



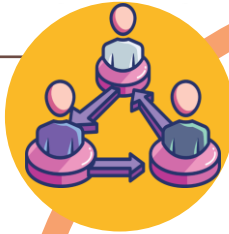
Inclusivity Barriers



Inclusive principle in policy making

Equal Access

All citizens should be able to participate in development.



Participation Rights

Every individual has the right to access & use their rights.



Freedom of Speech

Citizens are given space to voice their choices & experiences.



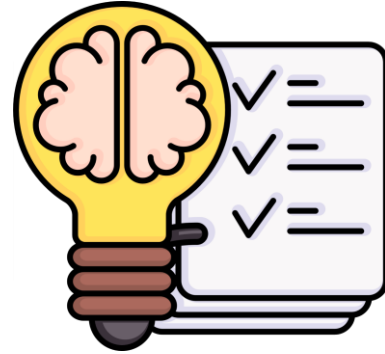
Safety & Equality

Fair & safe treatment physically, emotionally, culturally and socially.

Implementation of Inclusion in Development Process

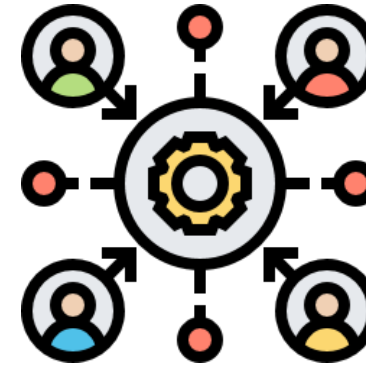
Design & Planning Stages

Collect citizen data and design inclusive and targeted programs



Application & Implementation Stage

Ensure active participation of vulnerable groups (women, people with disabilities, etc.)



Empathic Listening

Show respect and understanding without judgment.



Reporting Stage

Develop a report to measure the impact of inclusion in development





What is the Inclusion Process?

The process of overcoming barriers that limit one's attendance, participation, and achievement.



~UNESCO (2017:7)



Stages of Inclusion Process

The right to access everything is truly recognized



Everyone is able to be accepted by their social environment

Physical inclusion

Functional inclusion

Social inclusion

People are able to carry out their functions in accordance with the accessible facilities that have been provided



What is Emotional Inclusion?

Efforts to put emotional intelligence into action so as to be able to manage emotions appropriately

In Other Definitions:



Emotional inclusion is an effort to build a better environment by paying attention to the needs and emotional engagement of everyone.

Benefits of Emotional Inclusion



1. Maintains
Physical
Health



2. Improves
Mental Health



3. Creates a Safe
& Comfortable
Environment



4. Improves
Social
Relationships

Applying Emotional Inclusion in Daily Life

Normalize emotional honesty



Avoid bias in decision-making



Adjust responses to emotional needs



Create a safe space to process emotions



Check cultural & personal biases



World Vision

INDONESIA

Wahana Visi Indonesia bermitra dengan World Vision yang mendukung KOICA PMC Project yang bertujuan untuk meningkatkan Rehabilitasi Sosial bagi Remaja Rentan di Indonesia yang di inisiasi oleh Korea Institute for Development Strategy (KDS), ReBach Internasional dan World Vision Korea dan didanai oleh Korea Cooperation Agency (KOICA)

KOICA
Korea International
Cooperation Agency

KDS Korea Institute for
Development Strategy

RE:BACH
international

World Vision



Wahana Visi Indonesia

www.wahanavisi.org



@wahanavisi_id